



# FusionView 700 Series

## Data Sheet



**U4EA's FusionView 700 Series Element Management System (EMS) is an advanced, easy-to-use system that provides essential call quality and device performance information to network planners, operators, account managers and end-users.**

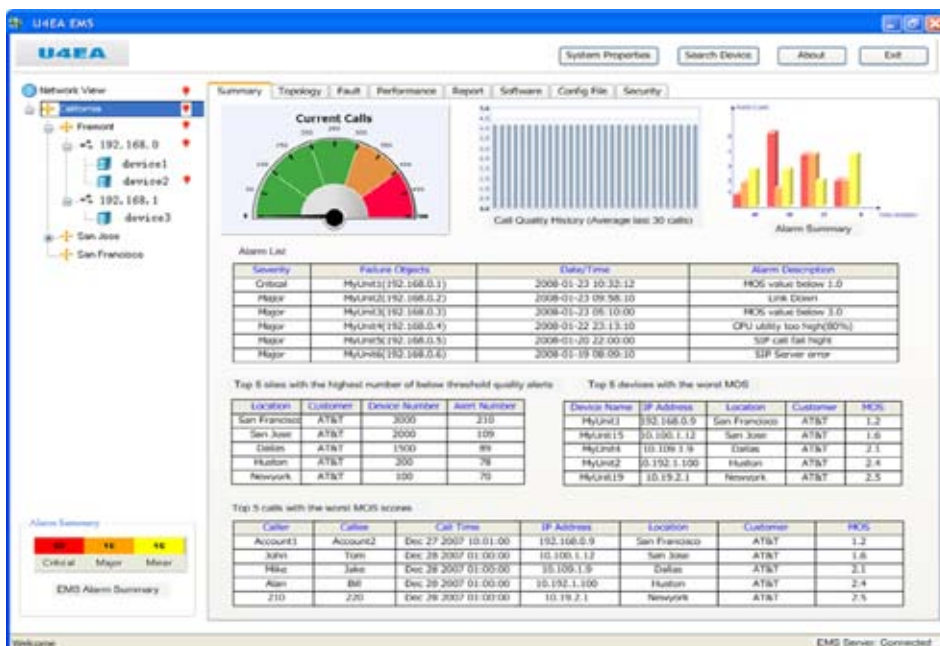
The FusionView 700 Series allows converged networks to easily scale by centralizing the configuration, management, and monitoring of voice and data traffic. Together with U4EA's Fusion Series Multi-service Business Gateways (MSBGs), FusionView

provides efficient multi-site and multi-device management.

FusionView is a critical component for service providers and enterprises looking for faster installation and troubleshooting together with better monitoring and management of VoIP call quality. FusionView reduces installation, configuration, and system management time, resulting in significant operational cost savings.

The FusionView 700 Series consists of the FusionView 700 model and larger, more powerful FusionView 710 model and helps service providers and enterprises deliver better quality of service, with lower operating costs.

### Dashboard Views Provide Critical Real-time Performance Statistics



### Product Highlights

#### Scalable Configuration

- 1U servers: FusionView 700 manages up to 300 devices; FusionView 710 manages up to 3,000 devices
- Scales to tens of thousands by stacking additional servers
- Dual, redundant disk drives and power supplies on FusionView 710
- Remote configuration, setup, and management of U4EA Fusion MSBG devices
- Local storage of MSBG and IP phone configuration files
- Software image management and group upgrades for multiple devices

#### Simplified Monitoring and Troubleshooting

- Passive call quality monitoring using historical and real-time Mean Opinion Score (MOS) statistics
- LAN/WAN problem isolation, VoIP signaling capture and analysis
- Automatic e-mail warnings triggered by low call quality, high CPU utilization, SIP or MGCP call failure, critical/major/minor alarms

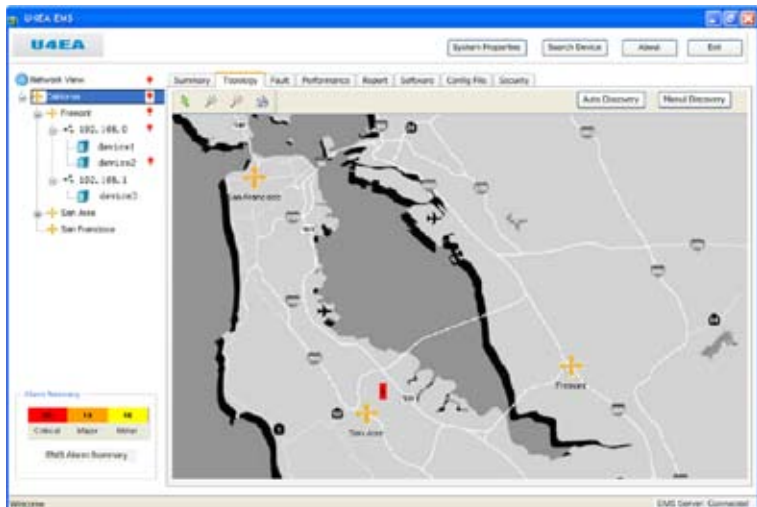
#### Comprehensive Reporting

- On-demand and scheduled reports
- Comprehensive report library, including average mean opinion score, below quality VoIP minutes, and below quality threshold alerts
- Flexible report output formats including .csv, pdf, html and XML

#### Increased Revenue, Reduced Costs

- Improve customer satisfaction and retention with faster trouble resolution
- Save on operating expenses with faster configuration and installation, and fewer, shorter support calls

## Geographical Views Provide Regional Network Overview

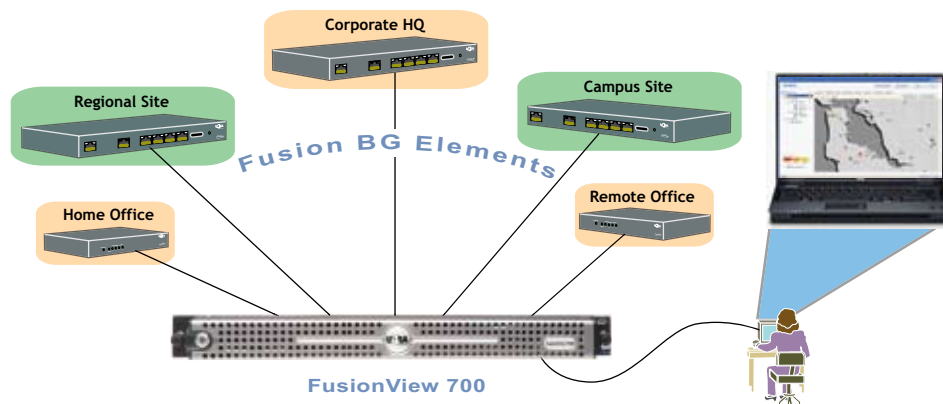


## Geographical View

- Search and group segments by network/subnet, MAC address, or geographic location
- EMS Alarm Summary clearly shows geographic location of critical/major/minor alarm “hot spots”
- Detailed information, down to component level including ports and endpoints, is easily available by simply clicking through to the device level

## FusionView Platform

FusionView is typically installed in the network operations center. The system supports multiple, authenticated user accounts with administrator defined access privileges. FusionView can be used as a stand-alone management system or as a complement to other network management systems.



## FusionView 700 Series Specifications

FusionView is available in an easy to install 1U rack-mountable device, suitable for enterprise or service provider deployments.

Feature	FusionView 700 - Manages up to 300 Devices	FusionView 710 - Manages up to 3000 Devices
LAN Ports	2 X 10/100/1000 Fast Ethernet	2 x 10/100/1000 Fast Ethernet
Serial Ports	2 x RS-232 (DB9), 4 x USB	2 x RS-232 (DB9), 4 x USB
Form Factor	1U rack 15.7” depth (16.76” with bezel)	1U rack
Memory	2 GB DDR2	2 or 4 GB DDR2
Internal Storage	Up to 250 GB cabled SATA	Up to 600GB: two 300GB hot-plug 3.5” SAS (10K RPM); Up to 1.5TB: two 750GB hot-plug 3.5” SATA (7.2K RPM)
Power Supply	345 W	670W, optional hot-plug redundant power (1+1)
Availability	ECC memory; optional SATA RAID	Hot-plug hard drives; hot-plug redundant power; redundant cooling; ECC memory; Spare Row; Single Device Data Correction (SDDC); /PERC 5/i integrated daughter card with battery-backed 256MB DDR2 cache; high availability failover cluster support; DRAC5
Remote management	Standard BMC with IPMI 1.5 support	Standard Baseboard Management Controller with IPMI 2.0 support; optional DRAC5 for advanced capabilities
Rack Support	4-post; 1U rack; versa-rack static rail chassis access	4-post (Dell rack), 2-post and 3rd party Versa rails, sliding rails and Cable Management Arm

U4EA Technologies Inc  
Fremont, CA

Toll free: +1 866 383 1107  
Telephone: +1 510 279 3355  
Fax: +1 510 687 0006

U4EA Technologies Ltd  
Bristol, UK

Telephone: +44 (0) 117 373 6772  
Fax: +44 (0) 117 373 6751

U4EA Ireland Ltd  
Cork, Ireland

Tel +353 (0) 21 230 9314  
Fax: +353 (0) 21 230 7060

U4EA Technologies Ltd  
Sophia, France

Telephone: +33 (0) 4 97 23 91 49  
Fax: +33 (0) 4 93 95 82 52

