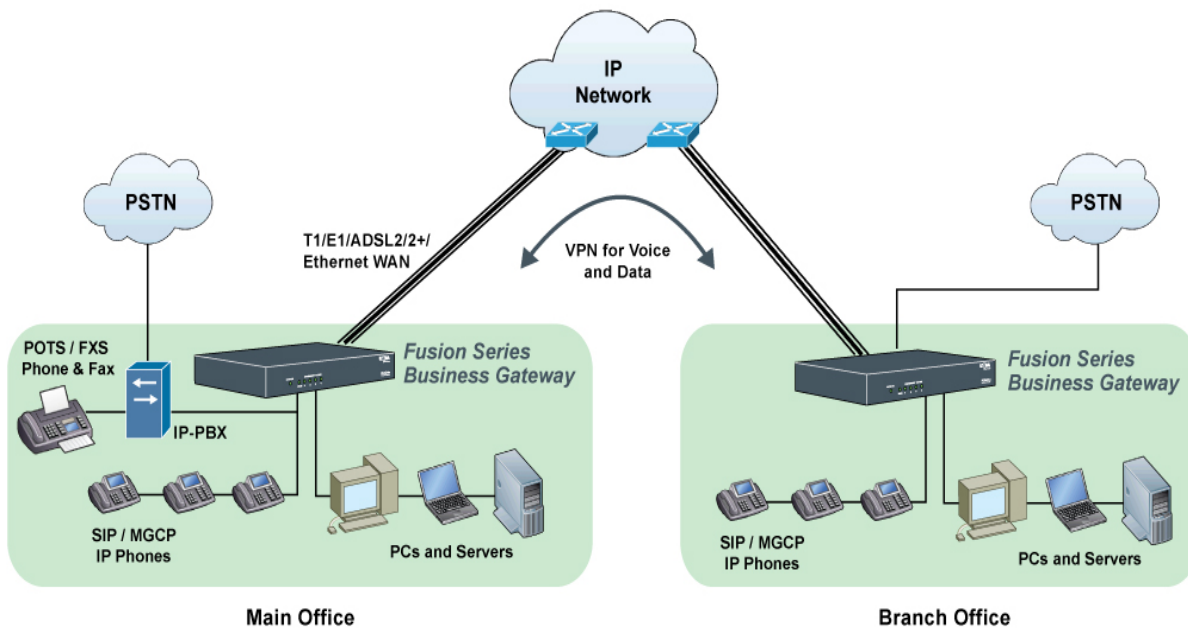




## IP-PBX with Branch Office Scenario

Your main office is located on the west side of town, with a branch office in the suburbs on the east side of town. But, you'd really like the two offices to function as a single virtual IP-PBX system location. U4EA's Fusion Series of Multi-Service Business Gateways offers a solution.



By using a Fusion Series box in the branch office (right side of the figure) with a VPN to the main office (left side of the figure), the branch office's network and phones appear as an extension of the main office's IP-PBX system. The Fusion Series box on the right side simply routes the calls - the mixing is still performed at the IP-PBX at the main office.